



2021 Genealogy Series

Welcome!

The National Archives and Records Administration (NARA) is pleased to present this educational series of lectures on how to do family research. As one of the nation's premier genealogy institutions, it is our mission to inform the public about the National Archives' holdings that relate to family history and to make those holdings available.





About the Lecture Series



2021

G
E
N
E
A
L
O
G
Y

S
E
R
I
E
S

Lectures demonstrate how to use federal records and other resources for genealogical research for beginning to experienced family historians. Our presenters include experts from the National Archives nationwide representing our facilities in College Park, MD; Denver, CO; New York City, NY; St. Louis, MO; and Washington, DC.



Join the conversation!

Participate with the presenters and other family historians during the live event.



2021

G
E
N
E
A
L
O
G
Y

S
E
R
I
E
S

Live Chat on YouTube:
log in and type your questions
and comments



Join us at **@USNatArchives**
on Twitter **#GenieSeries2021**





May Schedule



2021

G
E
N
E
A
L
O
G
Y

S
E
R
I
E
S

Date	Session Title	Presenter
Tuesday, May 4 1 p.m. ET	Preserving and Digitizing Personal Photo Albums and Scrapbooks	Sara Holmes Conservator in Preservation Programs National Archives at St. Louis, MO Noah Durham Supervisory Preservation Specialist National Archives at St. Louis, MO
Wednesday, May 12 1 p.m. ET	Finding Genealogy Resources and Tools on Archives.gov	Sarah Swanson Website Liaison National Archives at College Park, MD
Wednesday, May 19 1 p.m. ET	Tips and Tools for Engaging Family with Your Research Finds	Missy McNatt Education Specialist National Archives in Washington, DC Dorothy Dougherty Virtual Public Programs Director National Archives at New York City, NY



June Schedule



2021

G
E
N
E
A
L
O
G
Y

S
E
R
I
E
S

Date	Session Title	Presenter
Tuesday, June 1 1 p.m. ET	From Here to There: Researching Office of Indian Affairs Employees	Cara Moore Lebonick Reference Archives Specialist National Archives at St. Louis, MO Cody White Archivist and Native American Related Records Subject Matter Expert National Archives at Denver, CO
Tuesday, June 8 1 p.m. ET	Civil War Union Noncombatant Personnel: Teamsters, Laundresses, Nurses, Sutlers, and more	Claire Kluskens Genealogy/Census Subject Matter Expert and Digital Projects Archivist National Archives in Washington, DC
Tuesday, June 15 1 p.m. ET	Merchant Marine Records at The National Archives at St. Louis	Theresa Fitzgerald Director National Archives at St. Louis, MO



Tips and Tools for Engaging Family with Your Research Finds



2021

G
E
N
E
A
L
O
G
Y

S
E
R
I
E
S

As the family historian, you have amassed information and records that one day will pass to the next family historian. How do you share your findings with others? How you engage young family members involved with all your hard research may be another story. Education staff members Missy McNatt and Dorothy Dougherty will demonstrate fun and engaging ways to connect your research to family members, including your grandchildren. This lecture will highlight activities related to our most popular genealogy records, such as immigrant ship arrivals, U.S. Census records, naturalization records, and military and pension files. Staff will also demonstrate new ways to share your research finds in the social media world, using social media formats.

Presenter Biography



2021

G
E
N
E
A
L
O
G
Y

S
E
R
I
E
S



Missy Briscoe McNatt
Education Specialist

Missy Briscoe McNatt is an education specialist at the National Archives in Washington, DC, where she has worked since June 2006. She is the coordinator for the District of Columbia National History Day program, manages the Boeing Learning Center in the National Archives Museum, presents workshops to teachers and students, and contributes to education materials developed by the Education Team. Missy has facilitated a Genealogy Camp for Kids at the National Archives for the past seven years. Before working for the National Archives and Records Administration, she taught history and civics for many years. She earned her B.A. in history and anthropology from Sweet Briar College in Virginia and her M.A. in education with a minor in history from the College of Notre Dame in Baltimore, MD.

Presenter Biography



2021

G
E
N
E
A
L
O
G
Y

S
E
R
I
E
S



Dorothy Dougherty
Virtual Public
Programs Director

Dorothy Dougherty is the Virtual Public Programs Director at the National Archives at New York City and team leader for its Public, Education, and Outreach programs. She serves as a community leader with various federal, state and non-government organizations, bridging the use of documentary evidence to further civic literacy and awareness of the National Archives. As part of the Education and Public Programs Division of NARA, she provides virtual programs for a national audience. In her 20 years at NARA, she has presented programs and spoken at various local and national archival, genealogical, educational and historical conferences. She has a B.A. in history from Molloy College and an M.A. in history and an Archives Certificate from C.W. Post, Long Island University.



NATIONAL
ARCHIVES

Legislative Archives,
Presidential Libraries,
and Museum Services

Tips and Tools for Engaging Family with Your Research Finds

May 19, 2021

Connect Your Family with Stories and Records

We will demonstrate fun and engaging ways to:

- Share examples of federal records
- Use National Archives educational activities
- Showcase common connections using personal interests and stories of the National Archives
- Engage those stories online.

Fraktur of the Family of Peter Hunt,
www.docsteach.org/documents/document/fraktur-peter-hunt





Legislative Archives,
Presidential Libraries,
and Museum Services

Connect by Sharing Why, How and What you Research

Why share your story?

Lessons Learned from NARA's Annual Genealogy Camp for Kids:

- Kids want to connect to the past
- Research teaches civics a
- Research gets kids involved in the democratic process (e.g., census-taking, immigration, military service, voting, etc.)



2019 Genealogy Camp, National Archives Boeing Learning Center.



Legislative Archives,
Presidential Libraries,
and Museum Services

Research Lessons Learned from NARA's Genealogy Camp

We learned that genealogy research:

- Promotes critical thinking
- Promotes an authentic learning environment
- Strengthens family ties and gives family members something to discuss

An intern helps a camper at the National Archives Genealogy Camp.



Are young people interested in research?



A student researches at the
National Archives Genealogy Camp.

YES!

- Many are passionate about history; history fan
- Family member does genealogy (Grandmother is an Ancestry.com aficionado)
- Completed DNA testing and want to fill in missing information
- Family trips, such as Ellis Island, inspire a desire to learn about the past
- School project encourages an interest
- Enjoy research, solving puzzles and challenges!



Legislative Archives,
Presidential Libraries,
and Museum Services

Lessons Learned from NARA's Genealogy Camp

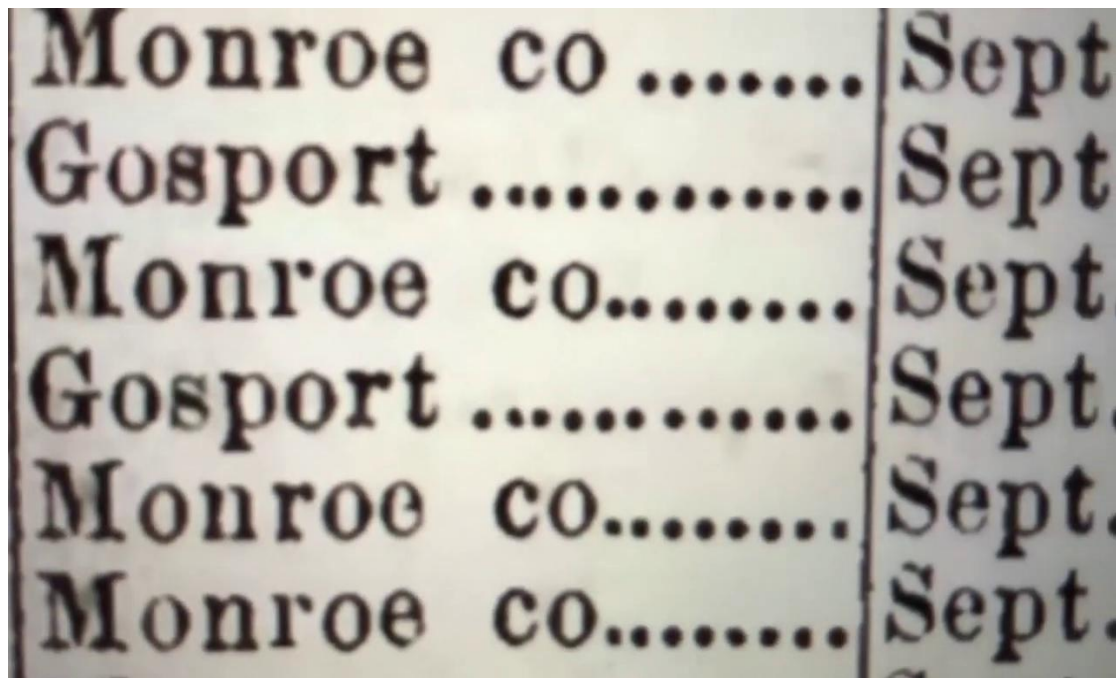
Great grandfather
registered for the
Draft!





Lessons Learned from NARA's Genealogy Camp

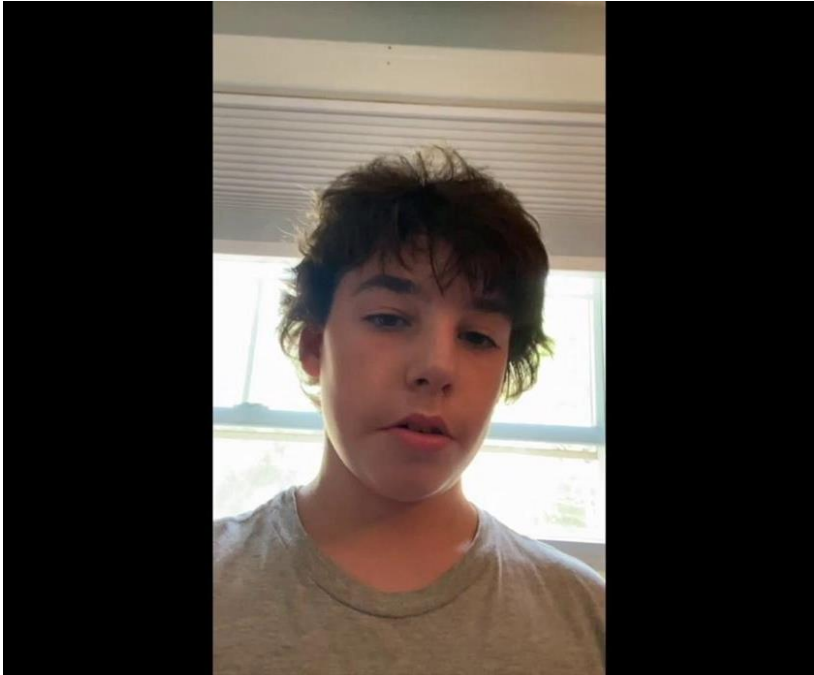
I found my 2x
great
grandpa's
Civil War
record!





Legislative Archives,
Presidential Libraries,
and Museum Services

Lessons Learned from NARA's Genealogy Camp



What's the oldest document in your family?



What Does your Family Tree Look Like?

Families include all who love and support each other!

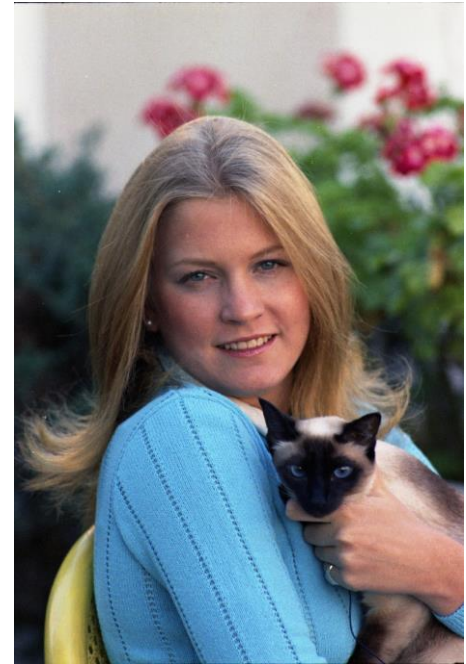




Legislative Archives,
Presidential Libraries,
and Museum Services

What Does Your Family Tree Look Like?

A family also can include pets!





Legislative Archives,
Presidential Libraries,
and Museum Services

Connect Family by Creating a Family Tree—Activity

www.archives.gov/education/family-history



NATIONAL ARCHIVES

[Blogs](#) · [Bookmark/Share](#) · [Contact Us](#)

Search Archives.gov

Search

RESEARCH OUR RECORDS

VETERANS' SERVICE RECORDS

EDUCATOR RESOURCES

VISIT US

AMERICA'S FOUNDING DOCUMENTS

Educator Resources

Home > Educator Resources > Genealogy Activities For Kids!

Educator Resources

Educator Resources

[DocsTeach: Our Online Tool for Teaching with Documents](#)

[Working with Primary Sources](#)

[Student Visits](#)

[Professional Development](#)

[Distance Learning Programs](#)

[eBooks, Online Tours, Videos & More](#)

[National History Day Resources](#)

[Education Programs at Presidential Libraries](#)

[Events & Public Programs](#)

Genealogy Activities For Kids!

Looking for fun ways to engage kids in finding family history? We have downloadable family trees and charts for kids of all ages.

Family Tree Charts for Kids





Start a Family Tree

The National Archives Education Staff developed several templates to help you create a family tree.

This tree lists out members in your family.

[Download all of them at:
www.archives.gov/education/family-history](http://www.archives.gov/education/family-history)





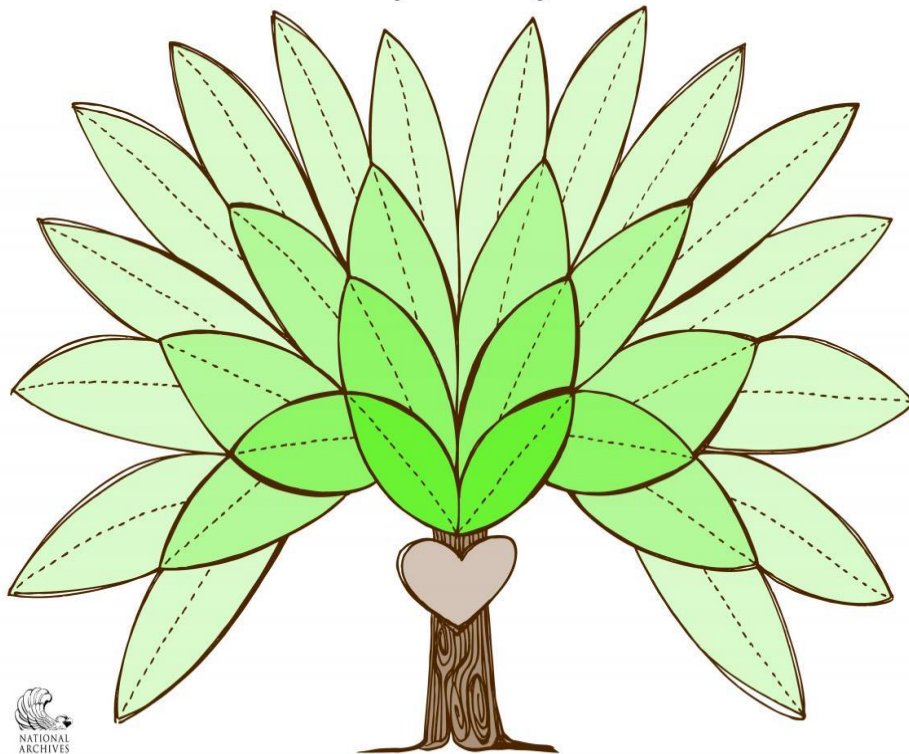
Legislative Archives,
Presidential Libraries,
and Museum Services

Family Tree (continued)

An example of a generic tree.

[Download all of them at:
www.archives.gov/education/
family-history](http://www.archives.gov/education/family-history)

My Family



Family Tree (continued)

An example of a “blended family” tree.

[Download all of them at:](#)

www.archives.gov/education/family-history





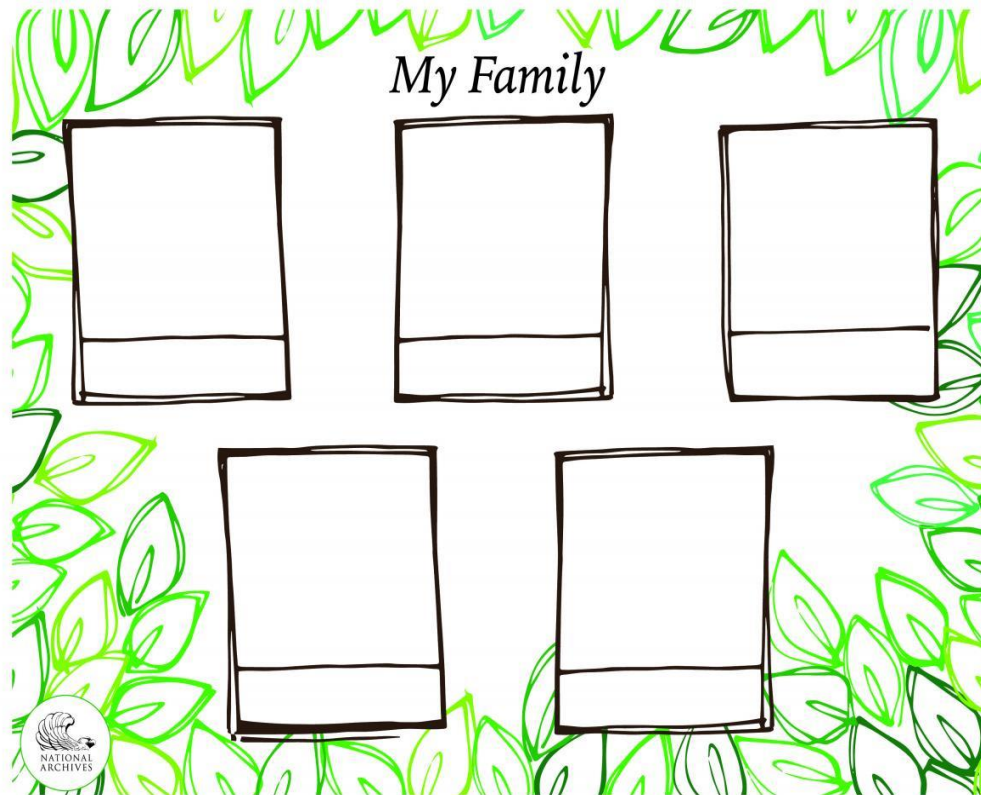
Legislative Archives,
Presidential Libraries,
and Museum Services

Family Tree (continued)

Photo trees work too!

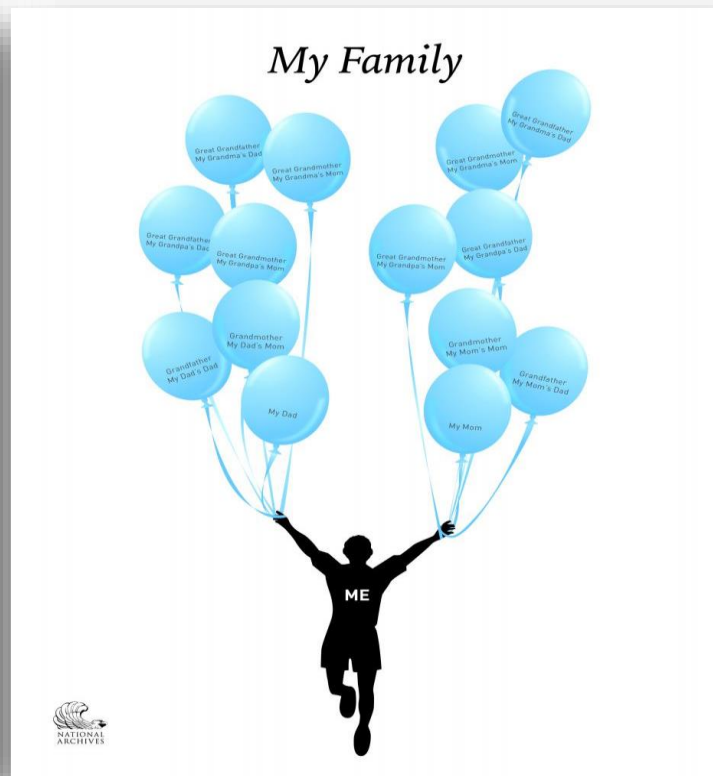
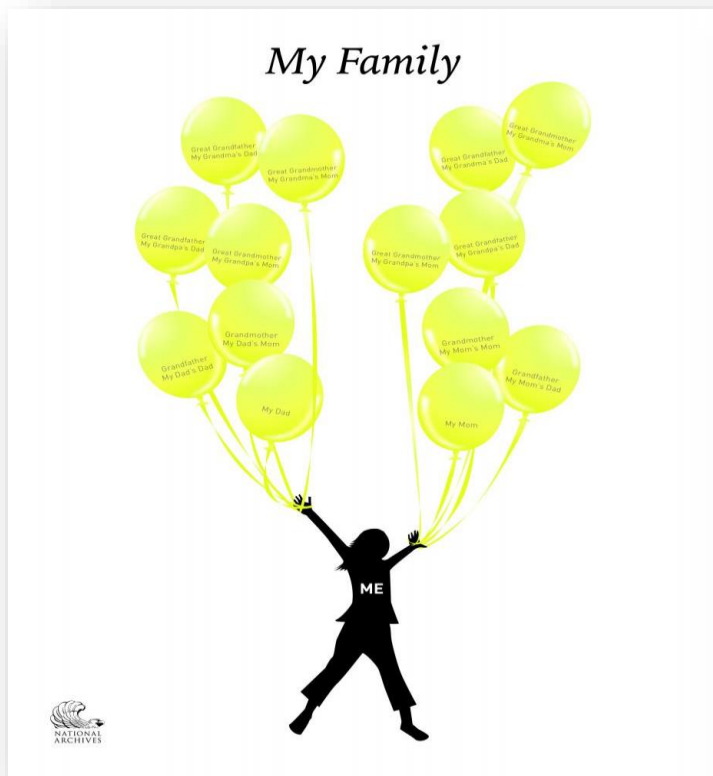
Download at:

[www.archives.gov/education/
family-history](http://www.archives.gov/education/family-history)



Family Tree (continued)

Download at:
www.archives.gov/education/family-history



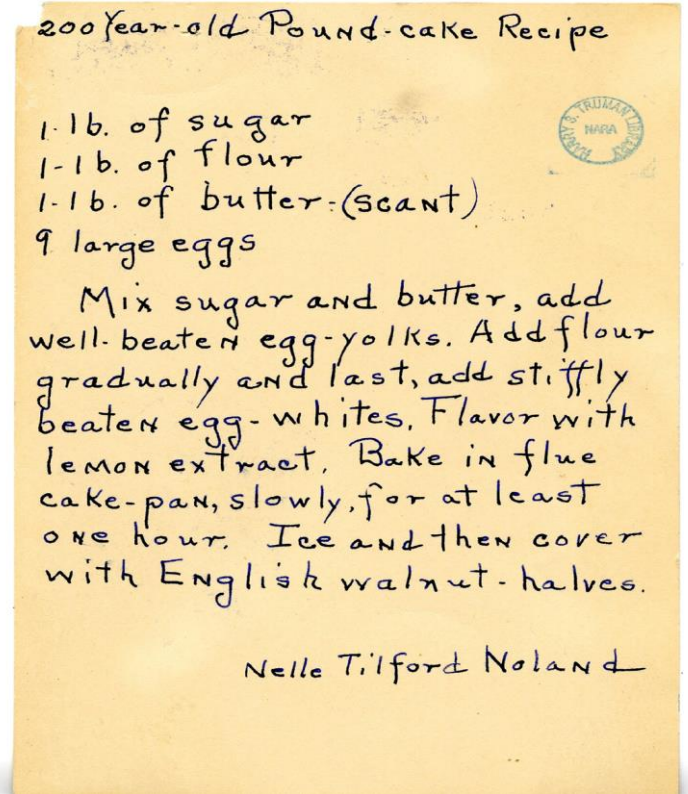


Connect Family Foods — Recipe Activity (continued)

Documenting family recipes is a great way to celebrate your ethnic heritage.

Here is a recipe for pound cake handed down through the Truman family. It was given to Bess W. Truman by Mary Ethel and Nellie Noland, cousins of Harry S. Truman.

200-year-old pound cake recipe:
<https://catalog.archives.gov/id/6779856>



Connect Family Foods — Recipe Activity

Create your own food tree or family recipe book. It's quite easy, fun, and a very different take on the traditional tree!

- Start your Investigation. Ask everyone these questions:
 - What is one of your favorite foods?
 - Why is it your favorite? Did someone special make it?
- Document your recipe (writing or drawing each food.)



Apple Pie

<https://catalog.archives.gov/id/34929597>

Connect the Family Tree — Hobbies



Do you know kids in your family who can draw, knit, crochet, embroider, craft, or write poems or stories?

Consider creating a family record using their talents (similar to the family record examples in the National Archives).

A sampler created in 1793 by Mary Hearn of Nantucket.

www.archives.gov/publications/prologue/2002/fall/samplers-1.html

Connect the Family Tree — Hobbies (continued)

Laura Goodale, daughter of Chester and Asenath Goodale, made this family record which her mother submitted along with her widow's pension application, as proof of her marriage to Chester Goodale, Revolutionary War veteran.

Chester served as a private for 15 months in Connecticut and Massachusetts. Asenath was awarded a pension of \$50 a year.

Sampler of Chester Goodale, ca. 1809
<https://catalog.archives.gov/id/1656127>



Connect the Family Tree — Hobbies (continued)



In 1842 Margaret Dickisson, widow of Revolutionary War veteran Isaac Dickisson, filed a pension application with the War Dept. Margaret received \$96 a year based on the documents filed on her behalf, including this illustrated family record.

Isaac served in the 4th Jersey Regiment of the New Jersey Line.

Fraktur of the Family of Isaac Dickisson
<https://catalog.archives.gov/id/300208>



Connect the Family Tree — Hobbies (continued)

Create your own family tree activity sheets inspired by the holdings of the National Archives.

Download at:

www.archives.gov/education/family-history

The
FAMILY RECORD
for

NAMES ▾ BIRTHS ▾ MARRIAGES ▾ IMPORTANT EVENTS

Explore family records in the holdings of the National Archives at www.docsteach.org.
Go to "Explore Primary Source Documents," enter the term "fraktur" and search.

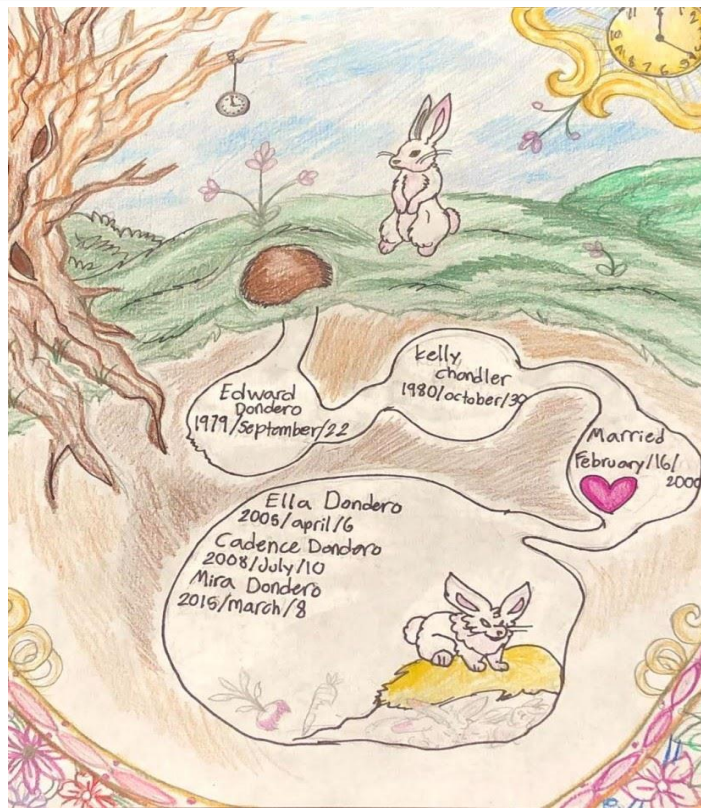


Connect the Family Tree — Hobbies (continued)

Activity: On a piece of paper -

- Add your family name at the top
- Add important information
- Add designs to compliment your record, e.g., a tree, house, bird, flower, etc.

Be as creative as you want to be!



Dondero Family Record,
created by Cadence, age 12.



Common Connections—Passenger Arrival Records

Connect important stories
of immigrant arrivals.

For Example:

- Who in the family arrived?
- When?
- From where?

www.docsteach.org/activities/teacher/exploring-america-diversity-luther-powell-beginner

The screenshot shows the DOCS Teach website interface. At the top, there is a blue header with the DOCS Teach logo and the tagline 'The online tool for teaching with documents, from the National Archives'. To the right of the header are the National Archives and National Archives Foundation logos. Below the header is a green bar. The main content area features social media icons for Facebook, Twitter, LinkedIn, and YouTube. The title of the activity is 'Exploring America's Diversity: Luther Powell (Beginner)' in a large, purple font. Below the title is the subtitle 'Making Connections' in a smaller, teal font. Underneath, it says 'Created by the National Archives'. To the right of this text are icons for a star, a printer, and a share button. Below the title and subtitle is a preview of a document titled 'Manifest of Alien Passengers on the SS Manchioneal'. The document is a historical form with columns for names, ages, and other details. To the right of the document preview is a purple box titled 'About this Activity' with a white background. Inside this box, it lists the creator as 'National Archives Education Team', the historical era as 'The Emergence of Modern America (1890-1930)', and the thinking skill as 'Historical Analysis & Interpretation'.

Common Connections—Passenger Arrival and Naturalization Records

What are the comparisons with the naturalized person?

Similarities and/or differences to your current family?

TRIPPLICATE No. 290458

UNITED STATES OF AMERICA

DECLARATION OF INTENTION
(Invalid for all purposes seven years after the date hereof)

STATE OF NEW YORK In the DISTRICT Court
SOUTHERN DISTRICT OF NEW YORK of UNITED STATES

I, LUTHER STEPHEN POWELL
now residing at 100 West 11th St. New York, N.Y. aged 32 years, do declare on oath that my personal description is:
Occupation None Sex Male color Black complexion Light color of eyes Brown
color of hair Brown height 5 feet 2 inches; weight 130 pounds; visible distinctive marks
none


I was born in West India nationality British
I was born in St. Hill St. St. James on March 24 1897
I am not married. The name of my wife/husband is _____
we were married on _____ at _____
born at _____ that he or he was _____ of the United States
born at _____ for permanent residence therein, and now
reside at _____ I have no children, and the name, date and place of birth,
and place of residence of each of said children are as follows: _____

I have not heretofore made a declaration of intention: Number _____ on _____
at _____
my last foreign residence was St. Hill St. St. James
I emigrated to the United States of America from Kingston Jamaica
my last entry for permanent residence in the United States was at _____ on April 20 1920
under the name of Luther Stephen Powell
on the vessel Hamilton
I will, before being admitted to citizenship, renounce forever all allegiance and
fidelity to any foreign prince, potentate, state, or sovereignty, and particularly,
by name, to the prince, potentate, state, or sovereignty of which I may be at
the time of admission a citizen or subject; I am not an anarchist; I am not a
polygamist nor a believer in the practice of polygamy; and I'm in my intention in
good faith to become a citizen of the United States of America and to reside
permanently therein; and I certify that the photograph affixed to the duplicate
and triplicate hereof is a likeness of me; so help me God.

Subscribed and sworn to before me in the office of the Clerk of said Court,
at New York this 19 day of April
1920 Certification No. _____ the Commissioner
of Naturalization showing the lawful entry of the declarant for permanent
residence on the date stated above, has been received by me. The photograph
affixed to the duplicate and triplicate hereof is a likeness of the declarant.

ALEX. DELBERT JR.
Clerk of the U. S. DIST. Court.
W. _____ Deputy Clerk.

FORM 100-2-A
U. S. DEPARTMENT OF LABOR
NATURALIZATION SERVICE



Luther Stephen Powell



Luther Powell www.docstach.org/activities/teacher/exploring-americas-diversity-luther-powell-intermediate

Colin Powell:
<https://catalog.archives.gov/id/6680449>



Legislative Archives,
Presidential Libraries,
and Museum Services

Common Connections—Passenger Arrival and Naturalization Records (continued)

How did your ancestors come to America?

- Through Ellis Island?
- Other location?

Immigrant children, Ellis Island, New York,
<https://catalog.archives.gov/id/6341034>



Common Connections—Passenger Arrival and Naturalization Records (continued)



Did they come through
Angel Island? Did they arrive a
different way?

Quarantine Station, Angel Island, California,
<https://catalog.archives.gov/id/176251230>



Common Connections—What would you take?

Ask simple questions to
engage your family?

Do you know what they
brought with them when
they arrived?

Photograph of Immigrants Landing at Ellis Island
<https://catalog.archives.gov/id/595034>





Legislative Archives,
Presidential Libraries,
and Museum Services

Common Connections—What would you take? (continued)

Engage younger kids by asking them what they would bring for a journey to a new life.

Ask them to document important items.

Use their answers to connect with your research finds.

Photograph of a Family with Their Covered Wagon During the Great Western Migration, <https://catalog.archives.gov/id/518267>



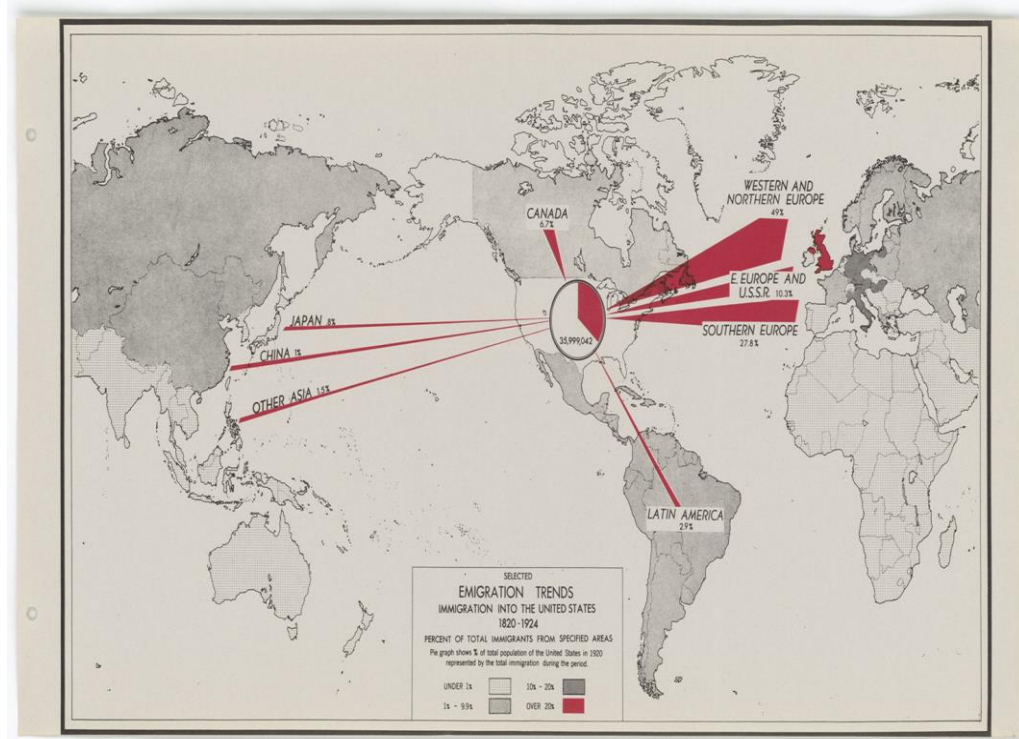
Common Connections—Mapping Your Immigrant Family

Depending on the records you have:

- Identify the arrival record and year.
- Identify on a map where he/she emigrated from.
- Where did they arrive in the U.S.? At what age?

Immigration into the United States 1820–1924

<https://catalog.archives.gov/id/6704472>





Common Connections—Mapping Your Immigrant Family

Map your own family story
using National Archives
Education activity sheets.

Download at:

[www.archives.gov/education/
family-history](http://www.archives.gov/education/family-history)

The _____ Family

IMMIGRATION JOURNEY

Where in the world is your family originally from?
Draw your family journey on the world map.

Draw a line from one of your ancestor's places of origin to where they first settled in the United States. (The location doesn't need to be exact.)

On the line, write the approximate date your ancestors came to the United States.

List other interesting facts you might know about your family's emigration story (why they left their home to come to the United States).



Common Connections—Mapping Your Immigrant Family (continued)

Map your own family story
using National Archives
Education activity sheets.

Download at:

[www.archives.gov/education/
family-history](http://www.archives.gov/education/family-history)

The Family
MIGRATION JOURNEY

Where did your family live when they first came to the United States?
Map out your ancestors' journey on the United States map.

Put a dot on the location where your ancestors first settled.

Put a dot on every new location they moved to. Draw lines from the first dot to the others.

On the lines, include the approximate dates they moved.

If you started with one side of your family, now show where another side first settled and moved. Use a different color.



Common Connections—U.S. Federal Census Records “Interview” Activity

“Common Connections” Interview Activity:

- Use the 1940 Census to locate your family.
 - Interview family members to compare/contrast current world with your 1940 family.
 - Highest grade of school completed?
 - This is a great way to engage the younger members of your family.
- *Use this activity with the other Census records for as far back as you can trace your family.

Tip: Begin with the most current census year available and work backwards. With the 72-year restriction on access to the Census, the most current year available is 1940.

UNITED STATES: 1940
SCHEDULE

AGE	SEX	RACE	Color	Age
8	A	D	10	11
Head	M	W	59	
Wife	F	W	49	
Grand Daughter	F	W	10	
Head	M	W	3	
Wife	F	W		



Common Connections—U.S. Federal Census Records “Geographic Connections” Activity

“Geographic Connections” Activity:

- Locate the same family member on multiple Census records.

For example, pull the 1940, 1930, and 1920 Census for your relative.

- Outline where he/she lived on a map.
- Talk about why your family may have moved away or stayed in the same general location.

LaChappa Family Photograph at Barona
<https://catalog.archives.gov/id/170100929>





Common Connections—U.S. Federal Census Records "Geographic Connections" Activity (continued)

Where did the family member live according to the 1940 Census?

For Example:

- Catherine Felten lived at 7807 74th Street, Glendale, Queens, NY.

State New York Incorporated place Queens
 County Queens Township or other division of county Glendale 19
ADL

U. S. GOVERNMENT PRINTING OFFICE 16-12376

Line No.	LOCATION		HOUSEHOLD DATA				NAME	RELATION	CODE
	Street, avenue, road, etc.	House number (or other address)	Number of households in order of preference	House rented (R) or owned (O)	Value of home, if owned, or monthly rental, if rented	Does this household pay on a farm? (Yes or No)			
1	2	3	4	5	6	7	8	A	
41	7813	185	R	50	no	Kennedy Margaret	Head	1	
42						Margaret	Daughter	1	
43						Robert	Daughter	1	
44	7811	185	R	36	no	Fredrick Nelson	Head	1	
45						Clara	Wife	1	
46						Jane	Daughter	1	
47	7811	189	R	36	no	Onium Richard	Head	1	
48						Clara	Wife	1	
49	7809	188	R	33	no	Fazio Nicholas	Head	1	
50						Caryton Lillian	Daughter	1	
51						Nancy	Daughter	1	
52						Lian Mary	Niece	1	
53						Ernest	Son	1	
54	7809	189	R	40	no	Commodore Frank	Head	1	
55						Mary	Wife	1	
56	7807	190	O	5000	no	Felten Katherine	Wife	1	
57						John	Head	1	



Common Connections—U.S. Federal Census Records "Geographic Connections" Activity (continued)

Where did the family member live according to the 1930 Census?

For Example:

- Catherine Felten lived at the same place in 1930 in Queens, NY.

State New York Incorporated place New York City
(Insert proper name and also name of city, as city, village, town, or borough. See instructions.)
 County Queens Ward of city 64th St. S.D. Block No. 28
 Township or other division of county Flushing Meadows Unincorporated place _____
(Insert proper name and also name of city, as township, town, precinct, district, etc. See instructions.) (Enter name of city unincorporated place having approximately 500 inhabitants or more. See instructions.)

Serial number of person in household	PLACE OF ABODE				NAME	RELATION	HOME DATA			PERSONAL DESCRIPTION				EDUCATION		Place of birth the United States which birth French foreign	PER	
	House number (in cities towns)	Number of dwelling houses in order of relation	Number of family in order of relation	Number of family in order of relation			Married in household	Male or female	Color or race	Age at last birthday	Married in household	Age at first marriage	Age at last birthday	Age at last birthday	Years of school attended			Years of college attended
1	2	3	4	5	6	7	8	9	10	11	12	13	14	15	16	17	18	
1	7802	87	125		Hartman Edward	head	R	58	K	W	W	34	23	10	10	0	0	USA
2					Emma	wife H					W	31	20	10	10	0	0	USA
3					Edward	son					W	7	0	0	0	0	0	USA
4				124	Wageli Herman	head	R	50	K	W	W	25	27	10	10	0	0	USA
5					Elizabeth	wife H					W	66	23	10	10	0	0	USA
6					Robert	son					W	42	21	10	10	0	0	USA
7					Brother	granddaughter					W	15	0	0	0	0	0	USA
8					Rachel Agata	daughter					W	33	22	10	10	0	0	USA
9					William	grandson					W	35	24	10	10	0	0	USA
10					Donald	grand-son					W	7	0	0	0	0	0	USA
11					Anna Patricia	daughter					W	25	22	10	10	0	0	USA
12	7533	85	127		Juch Walter	head	R	50	K	W	W	27	33	10	10	0	0	USA
13					Anna	wife H					W	24	22	10	10	0	0	USA
14					Hilsecha Estee	granddaughter					W	57	25	10	10	0	0	USA
15					Anna	wife H					W	22	20	10	10	0	0	USA
16					Robert	son					W	9	0	0	0	0	0	USA
17					Rich William	grandson					W	12	0	0	0	0	0	USA
18					Paul	grandson					W	13	0	0	0	0	0	USA
19					Julius Helen	granddaughter					W	73	24	10	10	0	0	USA
20	7535	89	128		Wesley George	head	R	50	K	W	W	20	22	10	10	0	0	USA
21					Mary	wife H					W	53	21	10	10	0	0	USA
22	7537	90	129		Oriston John	head	R	50	K	W	W	23	23	10	10	0	0	USA
23					Estelle	wife H					W	47	22	10	10	0	0	USA

Common Connections—U.S. Federal Census Records "Geographic Connections" Activity (continued)

Where did the family member live according to the 1920 Census?

For Example:

- Catherine Felten lived at a different address as 171 Montrose Avenue, Brooklyn, NY.

STATE New York 9-187
 COUNTY Kings
 TOWNSHIP OR OTHER DIVISION OF COUNTY Boro of Brooklyn **FOURTEENTH**
(Insert proper name and, also, name of ward, as township, town, precinct, district, etc.)

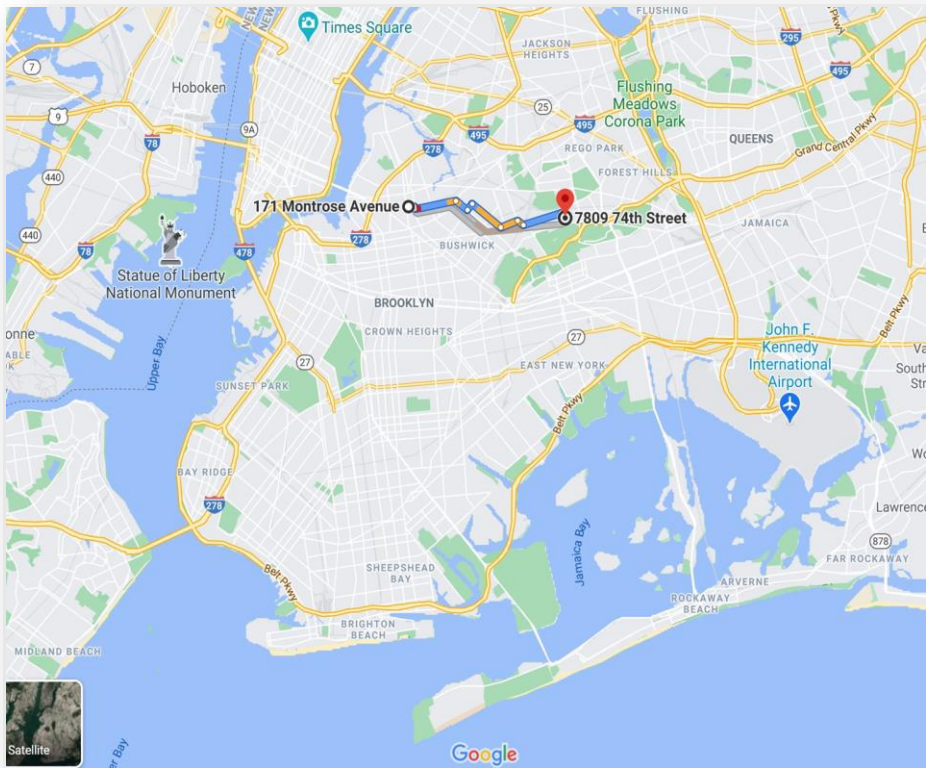
NAME OF INSTITUTION X (Insert name of institution, if any, and indicate the floor on which the entries are made.)

1	PLACE OF ABODE.			NAME of each person whose place of abode on January 1, 1920, was in this family. <small>Enter surname first, then the given name and middle initial, if any. Include every person living on January 1, 1920. Omit children born since January 1, 1920.</small>	RELATION.	7	8	9	10	11	12	PERSONAL DESCRIPTION.	
	2	3	4									Color or race.	Age at last birth- day.
51	244	41	167	Muccolo, Anthony	Son				M	W	2	S	
52		42	168	Fajetta, Lenora	Head	6	R		M	W	43	M	
53				Mary	Wife				F	W	44	M	
54				Anna	Daughter				M	W	14	S	
55				Bernardo	Son				M	W	10	S	
56				Cecilia	Daughter				F	W	9	S	
57				William	Son				M	W	7	S	
58				Josephine	Daughter				F	W	3	S	
59			169	Ferro, Vincenzo	Head	7	R		M	W	46	M	
60				Rosa	Wife				F	W	43	M	
61				Thomas	Son				M	W	16	S	
62	242	43	170	Stamm, Frank	Head	1	R		M	W	42	M	
63				Rose	Wife				F	W	41	M	
64			171	Felten, John	Head	2	R		M	W	38	M	
65				Catherine	Wife				F	W	37	M	
66				Mary	Daughter				F	W	12	S	
67			172	Beverette, Beatrice	Head	3	R		M	W	31	M	
68				Sadie	Wife				F	W	34	M	
69				Josephine	Daughter				F	W	1	S	
70			173	Schiavo, Bartolome	Head				M	W	29	M	
71				Marsina	Wife				F	W	22	M	
72			174	Sciassa, Joseph	Head	4	R		M	W	42	M	
73				Eva	Wife				F	W	34	M	
74				Frances	Daughter				F	W	12	S	
75				Elizabeth	Daughter				F	W	11	S	
76				Squatta	Son				M	W	9	S	

Montrose Ave.



Common Connections—U.S. Federal Census Records “Geographic Connections” Activity (continued)



Now map the movements!

Show how the same person moved over the decades using U.S. Federal Census records. (Even if it's only from Brooklyn, NY to Queens, NY!)

- You can create a map for as far back as you can track.
- Start a discussion with your family about location, movement and the reasons why.



Legislative Archives,
Presidential Libraries,
and Museum Services

Common Connections—U.S. Federal Census Records “Geographic Connections Activity” (continued)

Go one step further and plan a visit
the “old” house / “old neighborhood”
as a family trip.

Lancaster County, Pennsylvania

<https://catalog.archives.gov/id/521110>



Common Connections— U.S. Federal Census Records “Family Game Night!”

Create a Trivia Night!

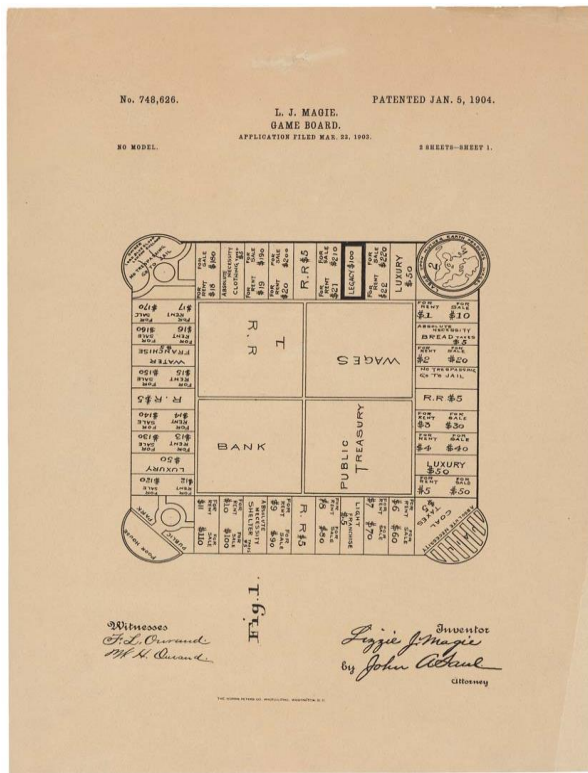
- Do a Zoom call or FaceTime meetup.
- Pick an ancestor and a record for your trivia game.

For Example: Use Federal Census records and quiz family:

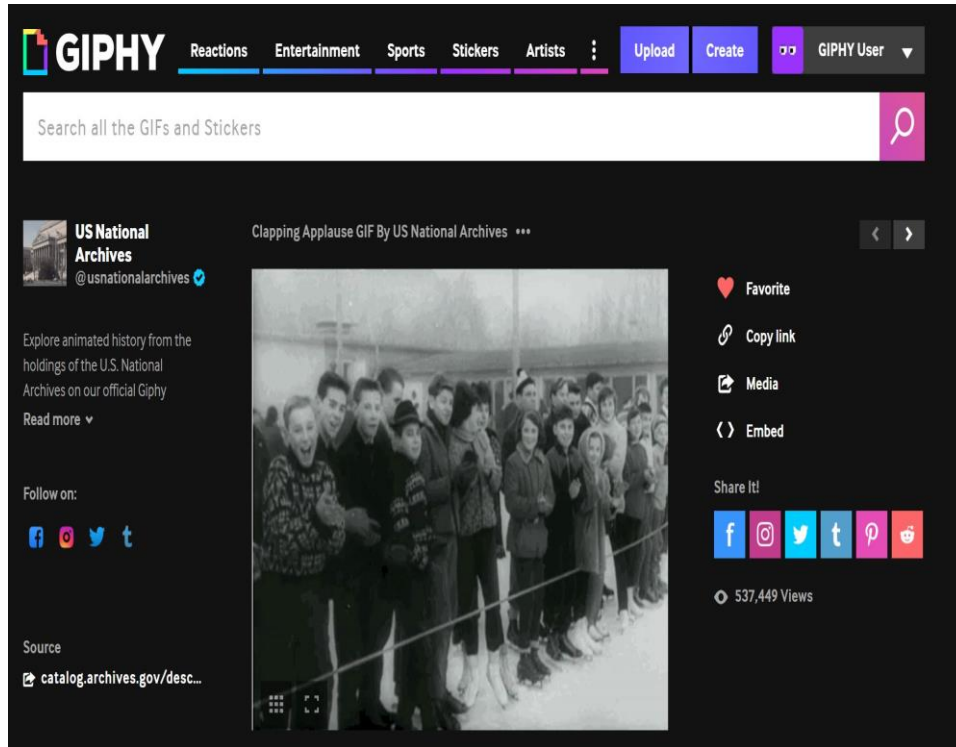
- What was (insert relative’s name) occupation in 1940?
- Did (insert relative’s name) own a radio in 1930?
- Did (insert relative’s name) live on a farm in 1920?
- Was (insert relative’s name) a survivor of the Union or Confederate Army or Navy? (1910 census)

Drawing for a Game Board

<https://catalog.archives.gov/id/595519>



Common Connections—U.S. Federal Census Records Future Family Game Night (continued)



The screenshot shows the Giphy website interface. At the top, there are navigation tabs for Reactions, Entertainment, Sports, Stickers, and Artists, along with buttons for Upload and Create. A search bar is present with the text "Search all the GIFs and Stickers". Below the search bar, a post from "US National Archives" (@usnationalarchives) is displayed. The post title is "Clapping Applause GIF By US National Archives". The main image is a black and white photograph of a group of people, likely a family, clapping and smiling. To the right of the image are interaction options: Favorite, Copy link, Media, and Embed. Below these are social media share buttons for Facebook, Instagram, Twitter, Tumblr, Pinterest, and Reddit. The post has 537,449 views. On the left side of the post, there is a bio for US National Archives and a "Follow on:" section with social media icons. At the bottom left, the source is listed as "catalog.archives.gov/desc...".

As part of the challenge or trivia game, you can select a modest prize that can be awarded to the winner!

You can even just send them a “Clapping Applause GIF” by the U.S. National Archives Giphy channel:
<https://giphy.com/usnationalarchives>

<https://giphy.com/gifs/l2SpRHzwXKITBzWz6/html5>



Common Connections—U.S. Federal Census Records Future Family Game Night (continued)

Start a “Family Challenge” around the 1950 Census release (April 2022.) Ask family members to guess what the responses. For example:

- Will your family be living in the same house or neighborhood in 1950 as they did in 1940, according to the U.S. Federal Census?

<https://aotus.blogs.archives.gov/2021/03/24/preparing-for-the-1950-census/>



Preparing for the 1950 Census

March 24, 2021 By Dferriero, Posted In Collaboration, Leadership, NARA Records, Special Events

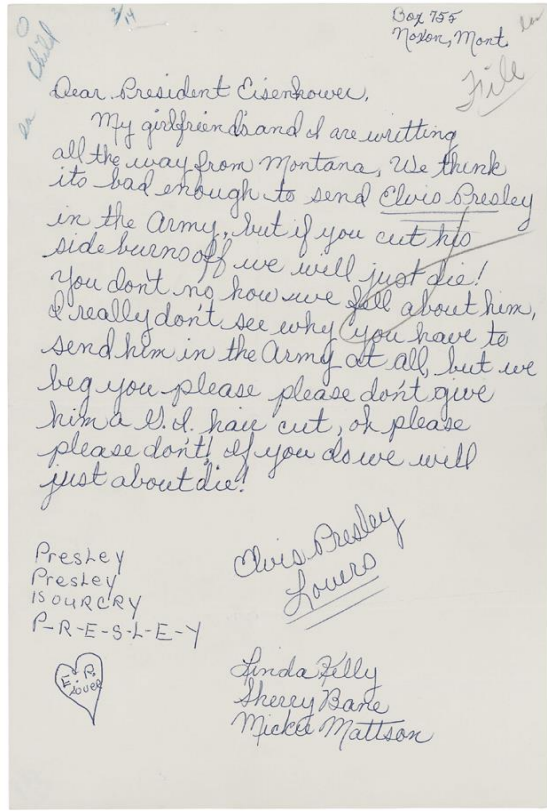
The next Decennial (ten-year) Census of the United States will be available online next year. In 1978, Public Law 95-416, also known as the “72-Year Rule,” restricted access to [decennial](#) records to everyone except for the individual named on the record for 72 years. The National Archives will release the 1950 Census records in April 2022.





Common Connections—U.S. Federal Census Records

Relatable examples (continued)



Letter from Linda Kelly, Sherry Bane, and Mickie Mattson to President Dwight D. Eisenhower Regarding Elvis Presley

“We think it is bad enough to send Elvis Presley in the Army, but if you cut his side burns off we will just die!”

Signed Elvis Presley Lovers....

Dwight D. Eisenhower Library

<https://catalog.archives.gov/id/594359>

Common Connections—Military Records

What Military Records have you found?

- Share veteran's stories with family.
- Add photos into the story when possible.
- Did you find a photo of a relative in their uniform?
- Connect those records with any current family member serving in the military.

The famous 369th arrive in New York City.

<https://catalog.archives.gov/id/26431290>



Common Connections—Military Records (continued)

9 | 2 L. Art'y. | U.S.C.T.

Albert Gant

Batt'y B, 2 Reg't U. S. Col'd L. Art'y.

Appears on

Battery Descriptive Book
of the organization named above.

DESCRIPTION.

Age *21* years height *5* feet *8* inches.

Complexion *black*

Eyes; *black* hair *woolly*

Where born *Leaksville, Md.*

Occupation *Labour*

ENLISTMENT.

When *Feb. 5, 1864*

Where *St. Mary's Co. Md.*

By whom *St. Loy*; term *3* yrs.

Remarks:
Mustered into service Feb. 5, 1864, at Fort Monroe, Va. by Capt. F. Martin, Ten dollars bounty paid.
Mustered out of the service at Brownsville, Texas, March 17/66.

Cly Powell Copist.

(239)

9 | 2 L. Art'y. | U.S.C.T.

Albert Gant

Batt'y B, 2 Reg't U. S. Col'd L. Art'y.

Appears on

Battery Muster Roll
for *July & August, 1864*

Present or absent *Present*

Stoppage, \$ *100* for

Due Gov't, \$ *100* for

Valuation of horse, \$ *100*

Valuation of horse equipments, \$ *100*

Remarks: *Last paid \$70.00 per month difference of increased pay due since enlistment \$0.75 215 app. June 22, 64*

Book mark:

D. J. Gujich Copist.

(250)

Veteran's Service Records can tell family so much i.e.; training, payment, awards, physical descriptions, illnesses, in addition to service.

Albert Gant enlisted in St. Mary's County, MD on February 5, 1864. He mustered into the U.S. Colored Troops at Fort Monroe, VA, and was mustered out in Brownsville, TX, on March 17, 1866.

Compiled Military Service Record of Albert Gant, United States Colored Troops Artillery (Civil War), Record Group 94, Records of the Adjutant General's Office, 1780s–1917.



Common Connections — Military Records (continued)

Share information about awards and certificates.

Charles Hudson, Meritorious Service in the pursuit and capture of Jeff Davis at Irwinsville, GA, May 10.

Compiled Military Service Record of Captain Charles T. Hudson, 4th Michigan Cavalry (Civil War), Record Group 94, Records of the Adjutant General's Office, 1780s–1917.

H | 4 Cav. | Mich.

Charles T. Hudson
Capt. 4 Mich. Cav.

Appears on

General Order

No. *65*, dated War Department, Adjutant General's Office, *June 22*, 1867.

Appointed to be

Lieutenant Colonel

BY BREVET

in the Volunteer Force, Army of the United States, for *meritorious services during the war*

To date from *June 2*, 1865.

(400) *J. Escalante* Copyist.

H | 4 Cav. | Mich.

C. T. Hudson
Capt. 4 Mich. Cav.

Appears on

General Order

No. *65*, dated War Department, Adjutant General's Office, *June 22*, 1867.

Appointed to be

Major

BY BREVET

in the Volunteer Force, Army of the United States, for *meritorious services in the capture of Jefferson Davis*

To date from *May 10*, 1865.

(400) *A. D. Moser* Copyist.



Common Connections—Military Records (continued)

Read up on any medical conditions and ask around the family—anyone have the same?

Maybe you did inherit eczema from great grandpa!

T.G. Dougherty, WW1 Service Record,
May 1918

X Ref - Dougherty Thomas Grand

FORM 88
MEDICAL DEPARTMENT, U.S. ARMY
(Authorized July 1, 1918)

PHYSICAL RECONSTRUCTION REGISTER
(Curative Worksheet Schedule)

IN THE CASE OF Ward 15

Thomas Grand
(Surname) (Given name)

17th St
(Home address)

1st (Rank) Co. (Company) 17th Inf (Regiment or station)

Place of birth Granville Ind.

Date of birth Oct 1898

Race _____ Married Single Widower _____

Children _____ Other Dependents _____

ARMY RECORD

Dates of enlistments:
May 28, 1918

Disabled Sick - eczema

Line of duty _____

FINAL DISPOSITION OF CASE

Date _____

Discharged on account of _____

Deserted _____ Died _____

Returned to service:

Full duty as _____

Partial duty as _____

Transmittal of Register to
SURGEON GENERAL

Date _____

Station _____

Signature _____

8-5013



Common Connections—Military Records (continued)

Is your veteran buried in a national cemetery? Other?

Visiting a veteran's final resting place can be a powerful way to connect family.

K. N. Walker, Brigadier General,
Medal of Honor, Silver Star, Purple Heart, 1945, WWII,
Arlington Cemetery, VA.



Common Connections—Military Records (continued)

You can also visit war memorials and ask family if they have visited memorials to connect to your veteran's service.

Vietnam Veterans Memorial, Washington, DC.
<https://catalog.archives.gov/id/7718563>





Engage by Showing Off!

www.archives.gov/preservation/family-archives



NATIONAL ARCHIVES

[Blogs](#) · [Bookmark/Share](#) · [Contact Us](#)

RESEARCH OUR RECORDS

VETERANS' SERVICE RECORDS

EDUCATOR RESOURCES

VISIT US

AMERICA'S FOUNDING DOCUMENTS

Preservation

Home > Preservation > How to Preserve Family Archives (papers and photographs)

Family Archives

[Preserving Family Papers](#)

[Handling Family Papers](#)

[Storing Family Papers](#)

[Displaying Family Papers](#)

[Digitizing Family Papers](#)

[Repairing Damage](#)

[Moldy or Insect-infested Family Papers](#)

[More About Caring for Family Papers](#)

[Converting Home Movies to Video Tape](#)

How to Preserve Family Archives (papers and photographs)

Maybe a relative sent you old letters, certificates, and family photographs and you are not sure what to do. Maybe you're wondering how to save your child's pictures and other mementos.

These simple tips will help you preserve your family papers and photographs for the next generation. Preventing damage is the key to preserving your items.

- [Handling Family Papers and Photographs](#)
- [Storing Family Papers and Photographs](#)
- [Displaying Family Papers and Photographs](#)
- [Digitizing Family Papers and Photographs](#)
- [Repairing Damage to Family Papers and Photographs](#)
- [What to Do About Moldy or Insect-infested Family Papers and Photographs](#)
- [More About Caring for Family Papers and Photographs](#)

Engage by Showing Off! (continued)



Badges and Medals,

<https://catalog.archives.gov/id/205583310>

- Think about family mementos and where they are kept.
- Does the family have any medals, letters, or certificates to display?
- Make them visible but remember to follow preservation guidelines.
- Make copies, share via email, summarize in a usable way. Put it in context. And show how a record fits into the family story.

Engage to Stories of Interest? — Sports

Any sports fans in your family?

- Start a conversation and create a connection with them about their favorite team!
- If you have a similar record in your family, show your family version.

World War I Draft Registration Card for George Herman Ruth
(Babe Ruth)

<https://catalog.archives.gov/id/641780>

Form 1 **30261** REGISTRATION CARD No. **28**

1	Name in full <i>George Herman Ruth</i>	Age in yrs. <i>23</i>
2	Home address <i>680 Commonwealth Ave Boston Mass.</i>	
3	Date of birth <i>Feb 7 1894</i>	
4	Are you (1) a natural-born citizen, (2) a naturalized citizen, (3) an alien, (4) or have you declared your intention (specify which)? <i>natural born</i>	
5	Where were you born? <i>Baltimore Maryland U.S.</i>	
6	If not a citizen, of what country are you a citizen or subject?	
7	What is your present trade, occupation, or office? <i>Base Ball - Boston American Fenway Park</i>	28
8	By whom employed? <i>Boston American Fenway Park</i>	
9	Have you a father, mother, wife, child under 12, or a sister or brother under 12, solely dependent on you for support (specify which)? <i>None</i>	
10	Married or single (which)? <i>Married</i>	Race (specify which)? <i>Caucasian</i>
11	What military service have you had? Rank <i>None</i>	
12	Do you claim exemption from draft (specify grounds)? <i>None</i>	

I affirm that I have verified above answers and that they are true.

George Herman Ruth
(Signature or mark)

If person is of alien descent, conscript



Engage to Stories of Interest? — Movies



Any *Sound of Music* movie fans in your family?

- Start a conversation about the Von Trapp family members and how they emigrated from Austria to escape Europe as the Nazis rose to power. Talk about family lore and use the records to confirm (or clear up) actual events.

Maria von Trapp, photograph from her Declaration of Intention, dated January 21, 1944.

www.archives.gov/publications/prologue/2005/winter/von-trapps



Engage to Stories of Interest? – Holiday Traditions

Do you have any holiday traditions?

- Remember in Frank Capra's movie, *It's a Wonderful Life*, which includes the war time story of WWII? Share records about Jimmy Stewart to engage family with military service.

Official Military Personnel File of James M. Stewart. His full service record is online at our catalog at: <https://catalog.archives.gov/id/40938631>

To be prepared in TRIPPLICATE

REPORT OF INDUCTION OF SELECTIVE SERVICE MAN

39230721

Stewart James Neiland
(Last name) (First name) (Middle name) (Army serial No.)

Permanent address Los Angeles Los Angeles Calif (Urban) (Rural) English (State) (County) (Municipality)

Birthplace Indiana Pennsylvania (State or country) Birth date May 16, 1908 (City, town, or county) (State or country) (Month) (Day) (Year)

Age 32 years 10 months U.S. citizen Yes Race White

If an applicant for citizenship, show date and court in which application was made: XXX

If not a citizen, show country of allegiance: XXX

Grade completed in grammar school: 4 high school: 4 college or university: 4

Civilian trade or occupation: A-502 years so engaged: 5 weekly wage: \$1500

Marital status: Single Dependents: none (State number and relationship)

Previous service in United States military or naval service, Marine Corps, Coast Guard, or National Guard in an active, inactive, or reserve status: None (State last service only)

If Place "X" in box opposite, unless if community of 2,000 population or greater, otherwise place "X" in box opposite rural.

Urban	Rural	Day	Month	Year
Home	Foreign	Overseas	Married	Single

NEAREST RELATIVE AND PERSON TO BE NOTIFIED IN CASE OF EMERGENCY

Nearest relative: Elizabeth H. Stewart (Name in full)

Relationship: Other Address: 104 N. 7th St. Indiana Pennsylvania (City, town, or rural route, if none, so state) (County, town, or post office) (State or country)

Person to be notified in case of emergency: Elizabeth H. Stewart (Name in full)

Relationship: Other Address: 104 N. 7th St. Indiana Pennsylvania (City, town, or rural route, if none, so state) (County, town, or post office) (State or country)

DESIGNATION OF BENEFICIARY

The persons eligible to be my beneficiary are designated below:

1. (Full name and address of wife, if no wife, or if she is deceased or divorced, so state) NONE (Wife's full address)

2. (Full name and address of each minor child, and each dependent child over 21 years of age. If there are no children, so state. If the address is the same as the wife's, so state. Do not repeat address.) NONE

3. I desire to designate no person as my beneficiary (If designation of beneficiary is made in own handwriting "I desire to designate any person as my beneficiary")

4. (If beneficiary is named in line 3 but naming of alternate is desired, name must state in own handwriting: "I desire to designate an alternate beneficiary.") NONE

The above recorded information is correct.

Signature of inducted man: James M. Stewart (First name) (Middle name) (Last name)

Witnessed at: Induction Sta. W. Los Angeles, Calif. on MAR 22 1941

Signature of witness attached: Elmer E. Neiland (Name of witness typed) Private Duty (No) (Grade and appointment)

INSTRUCTIONS

1. An original and two copies of this form will be prepared for each selection. For each man inducted, the original signed copy accompanied by FBI Military Fingerprint Card will be forwarded from Induction Center to The Adjutant General, Washington, D. C. One unsigned copy will be sent to Reception Center for extension of duty time by Coast Area Headquarters for machine record purposes, then to The Adjutant General. One signed copy will be given to the man. For each man rejected the original will be sent to the local board; one unsigned copy to The Adjutant General; one signed copy to the rejected man. All copies other than original will be clearly marked "Copy" in large and prominent letters diagonally across the face of the form.

2. Fingerprint are not required for rejected men; for inducted men they are required only on original copy and on FBI Military Fingerprint Card.

3. Forms of men rejected will be marked "Rejected" in large letters at the top of first page.

W. P. A. - A. - C. - O. - 30722 - 224
October 1, 1939 (1)

U. S. GOVERNMENT PRINTING OFFICE



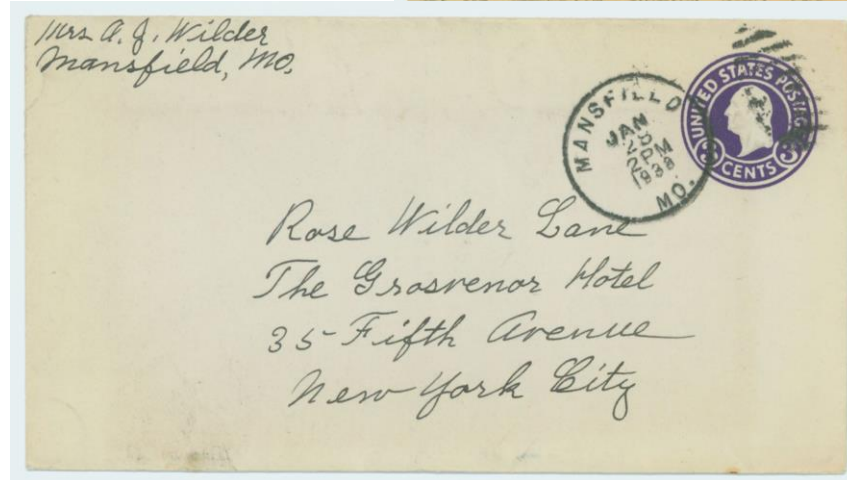
Engage to Stories of Interest? –Books

Have the kids in your family watched
Little House on the Prairie?

Did they read the books
by Laura Ingalls Wilder?

We have numerous records
about the family.

<https://www.docsteach.org/documents/document/letter-from-laura-ingalls-wilder-to-rose-wilder-lane>



The readers must know all that but they should not be made to think about it. The story of Silver Lake is connected with Plum Creek close enough in Laura's mind and her thoughts are given the reader, but it is second hand and the knowledge

be if told be passed the interest is already

to insist that it.

once in the

d profited at my copy with perhaps

ugh lights, could do

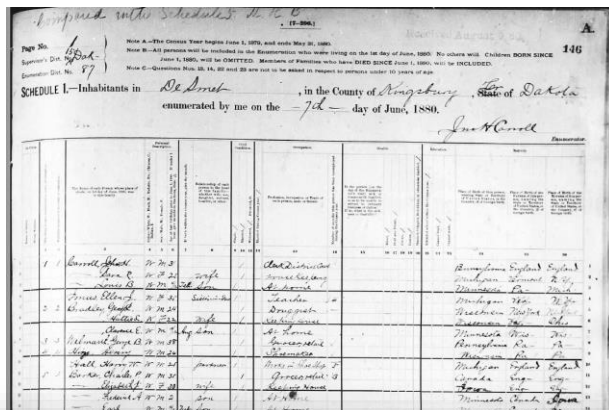
g such a

bother to you. Let me go over it carefully again now and see if in your judgment we can't try it out on Harpers.



Engage to Stories of Interest? Ingalls Family example

You can even share Census records listing Mary (age 15), Laura (age 13), Carrie (age 9) and Grace (age 3) on the 1880 U.S. Federal Census.



Ingalls Charles P	W	M	44		1	Farmer		New York	Pa	N.Y.
—, Caroline L	W	F	40	wife	1	Keeping House		Wisconsin	Mass	Mass.
—, Mary A	W	F	15	Daughter	1	help in keeping house		Wisconsin	N.Y.	Wis.
—, Laura E	W	F	13	Daughter	1	help in keeping house		Wisconsin	N.Y.	Wis.
—, Caroline C	W	F	9	Daughter	1		1	Kansas	N.Y.	Wis.
—, Grace L	W	F	3	Daughter	1			Iowa	Wis.	Wis.

www.archives.gov/files/education/lessons/wilder/1880.pdf



Engage to Stories of Interest? Charles Ingalls example

FINAL HOMESTEAD AFFIDAVIT.

NEWS PRINT, DE SMET, DAK.

HOMESTEAD PROOF.

FINAL AFFIDAVIT UNDER SECTION 2291, REVISED STATUTES OF THE UNITED STATES.

I, *Charles P Ingalls*, having made a Homestead Entry of the
A & 1/4 Matertown Section No. *3* in Township No. *110* of Range No. *56*
 subject to entry at _____ under Section 2289 of the Revised Statutes
 of the United States, do now apply to perfect my claim thereto by virtue of Section No. 2291 of the Revised
 Statutes of the United States; and for that purpose do solemnly ~~swear~~ that I am a citizen of the United
 States; that I have made actual settlement upon and have cultivated said land, having resided thereon since
 the *1st* day of *May* 188*6*, to the present time; that no part of said
 land has been alienated, except as provided in Section 2288 of the Revised Statutes, but that I am the sole
 bona fide owner as an actual settler; that I will bear true allegiance to the Government of the United States;
 and further, that I have not heretofore perfected or abandoned an entry made under the Homestead Laws of
 the United States.

Charles P Ingalls

I, *J W Raulbach* Judge of the Office Clerk, ^{County} in and for *Thompson*
 County, Dakota, do hereby certify that the above affidavit was subscribed and sworn to before me this
7 day of *May* 188*6*; and I further certify that the Judge of
 said Court is not a resident of this County and is now absent.

J W Raulbach
 Judge of the Office Clerk, *Thompson Co Dakota*

Do you have any family that
went out West to
homestead?

Share records about
Charles Ingalls to connect.

Homestead Proof Testimony of Charles Ingalls
<https://www.archives.gov/research/land/ingalls>



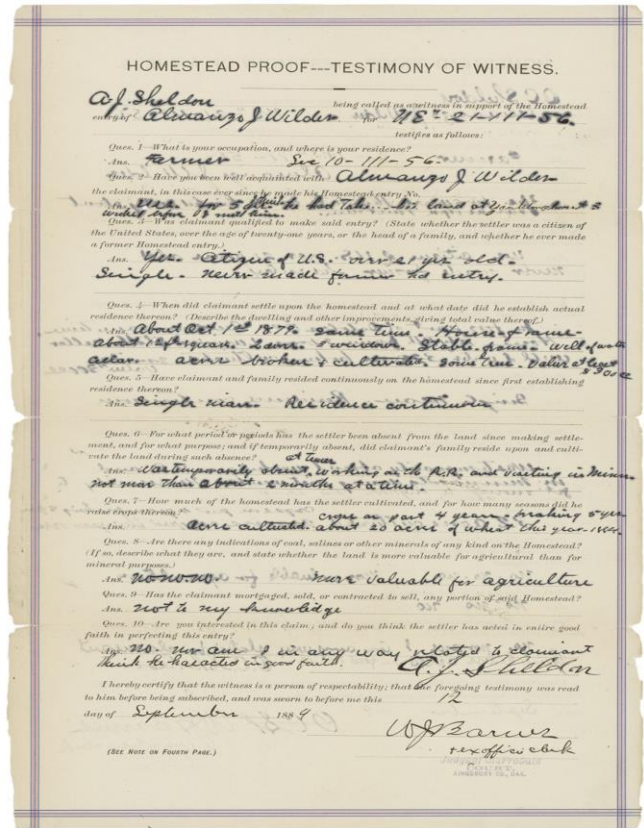
Engage to Stories of Interest? Almanzo Wilder example

Or you can share records about Almanzo Wilder.

Share records about the family to show similarities and differences between your family.

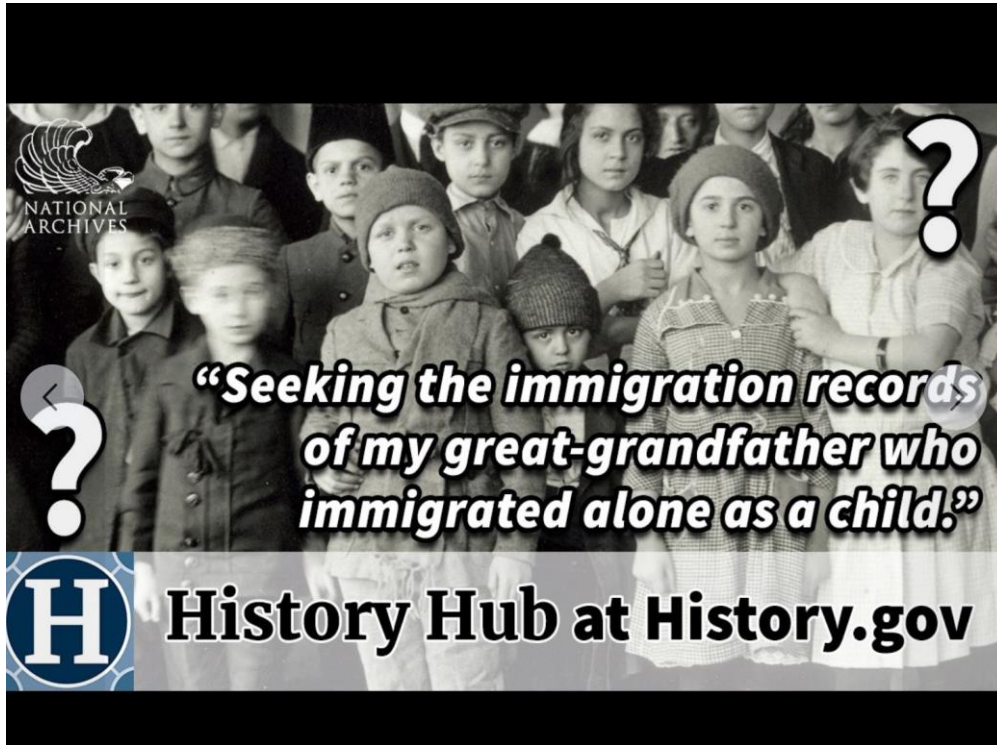
Homestead Proof Testimony of Almanzo Wilder

www.docsteach.org/documents/document/homestead-proof-testimony-of-almanzo-wilder





Engage, Post, & Share Threads – Social Media



History Hub- a research support community for everyone!



US National Archives

October 11, 2020 · 🌐



“My great-grandfather arrived here from Germany alone as a young child in 1880. Where can I find his immigration records?”

See the answer to our #QuestionoftheWeek on #HistoryHub, our crowdsourced platform for history and genealogical research where anyone can ask questions and get answers from archivists and other community members.

<https://historyhub.history.gov/thread/6996...>

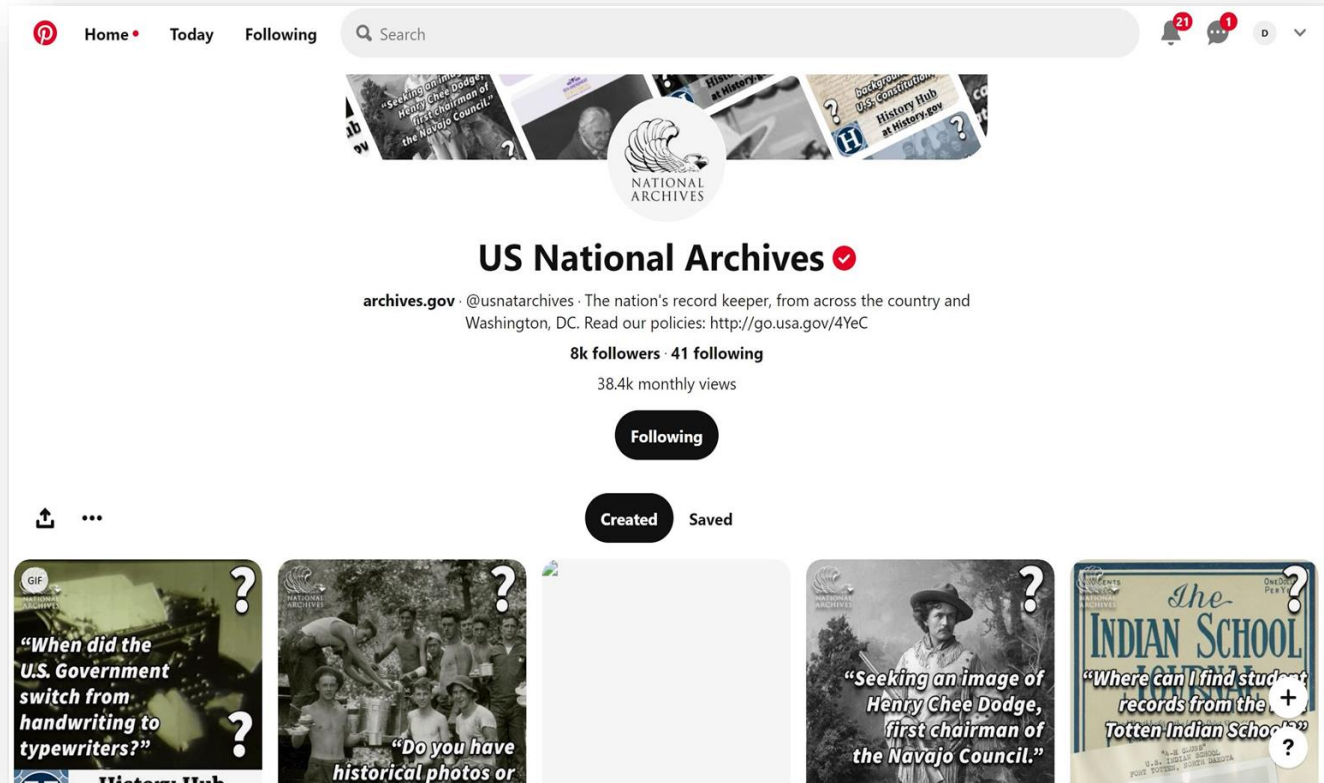
👍❤️👤 131

1 Comments 38 Shares

Engage Your Story — On Pinterest

On Pinterest, you can:

- share photos, stories
- tag family & friends
- answer questions



Share “Relatable Stories” — Facebook



Recently, Auschwitz survivor Lilly Engleman Ebert identified herself in a reel of U.S. Army Signal Corps footage (she is second from right in this photo). Ebert’s great-grandson managed to track down the short clip amongst hours of footage.

Ebert had been imprisoned at Auschwitz before being forced on a death march to Buchenwald, where she was eventually liberated by American soldiers.

www.facebook.com/usnationalarchives



Legislative Archives,
Presidential Libraries,
and Museum Services

Share “Relatable Stories” — Instagram

Mabel Ping-Hua Lee, 16
SUFFRAGIST LEADER AT

#19SuffrageStories

usnatarchives • Following

usnatarchives In the early 20th century, Mabel Ping-Hua Lee moved from Canton, China, to New York City to live with her missionary father and their family. This was during the era of the Chinese Exclusion, which severely curtailed immigration from China through a series of acts of Congress. These acts also prohibited Chinese immigrants from becoming U.S. citizens, rendering them unable to vote.

This did not stop Mabel Ping-Hua Lee from fighting for suffrage, however. A member of the New York Women's Political Equality League and an outspoken feminist, Lee began writing and speaking publicly about woman

Liked by [redacted] and 628 others

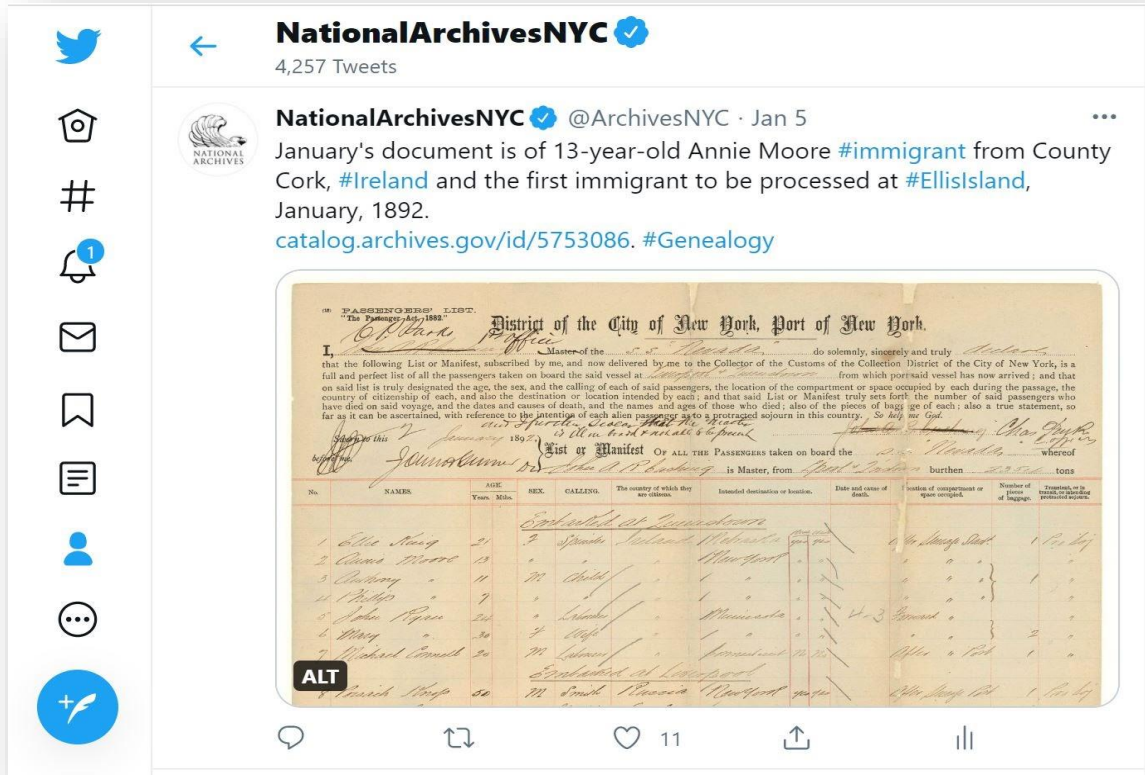
AUGUST 6, 2020

Add a comment... Post

Anyone in the family involved in the suffrage movement?

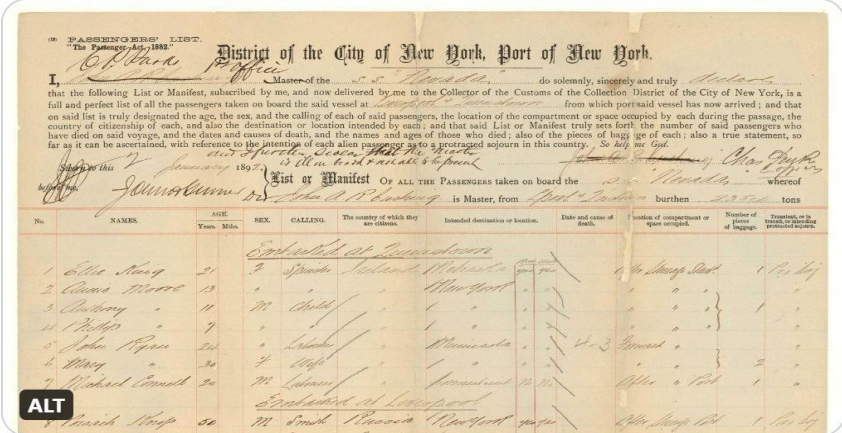
Share “relatable” stories of significant anniversary events.

Share “Relatable Stories” – Twitter



NationalArchivesNYC 4,257 Tweets

NationalArchivesNYC @ArchivesNYC · Jan 5
 January's document is of 13-year-old Annie Moore #immigrant from County Cork, #Ireland and the first immigrant to be processed at #EllisIsland, January, 1892.
catalog.archives.gov/id/5753086. #Genealogy



No.	NAMES	AGE		SEX	CALLINGS	The country of which they are citizens	Intended destination or location	Date and cause of death	Location of compartment or space occupied	Number of pieces of baggage	Fare, or amount paid for passage
		Yrs.	Mths.								
1	Edie May	5		F	Spanish	Ireland	New York		No. 1000 Deck	1	1.00
2	Annie Moore	13		F	Child	Ireland	New York		" " "	1	"
3	William	11		M	Child	Ireland	New York		" " "	1	"
4	Philip	7		M	Child	Ireland	New York		" " "	1	"
5	John Ryan	20		M	Child	Ireland	New York		" " "	1	"
6	May	30		F	Child	Ireland	New York		" " "	1	"
7	Michael Connell	20		M	Child	Ireland	New York		" " "	1	"
8	Frank Wisp	50		M	Child	Ireland	New York		" " "	1	"

On Twitter, you can:

- share photos, stories
- tag family & friends
- download and share



Legislative Archives,
Presidential Libraries,
and Museum Services

Engage Your Story — On Your Own Social Media Accounts



On Instagram, you can:

- share photos, stories
- tag family & friends
- answer questions



Tips and Tools Summary

Engage your family with your findings:

- Use available National Archives templates and activities.
- Consider common connections and talk about them.
- Use social media to share your “research finds” with family.
- Be creative! And have fun!

<https://www.docsteach.org/documents/document/photograph-of-a-mr-orinick-and-his-family>





After the broadcast . . .



2021

G
E
N
E
A
L
O
G
Y

S
E
R
I
E
S

Email questions to
education@nara.gov

Video recordings of lectures and
downloadable handouts
will remain online at

www.archives.gov/calendar/genealogy-fair



Feedback

We value your opinion.

Please take a minute to complete a short evaluation. Your comments help us maintain the quality of our services and plan future programs.

Thank you!



2021

G
E
N
E
A
L
O
G
Y

S
E
R
I
E
S

Event Evaluation:

www.surveymonkey.com/r/KYREventEval



KNOW YOUR RECORDS

National Archives and Records Administration



2021

G
E
N
E
A
L
O
G
Y

S
E
R
I
E
S

Educational resources on how to access and do research using U.S. Federal Government records held at the National Archives and Records Administration.

Know Your Records

www.archives.gov/calendar/know-your-records

Videos and Handouts on **You** 



Questions & Answers in Chat

Please stay if you have questions.

Although this concludes the video portion of the broadcast, we will continue to take your questions in **Chat** for another 10 minutes.



2021

G
E
N
E
A
L
O
G
Y

S
E
R
I
E
S